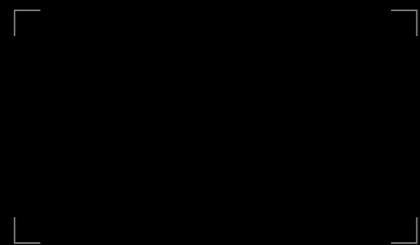


RECOMMEND PRODUCT



Distributed by



www.uniview.com

Sales: overseasbusiness@uniview.com

Technical Support: globalsupport@uniview.com

2019.01 OM - 190101 - SD V3.0

Disclaimer: All rights reserved, including final interpretation and content amend

2019 V1

ABOUT US

Aiming to excellence

Uniview is the pioneer and leader of IP video surveillance. Firstly introduced IP video surveillance to China, Uniview now is the third largest player in video surveillance in China. In 2017, Uniview has the 6th largest global market share (IHS Research).

Uniview has complete IP video surveillance product lines including IP cameras, NVR, IP Storage, Decoder, Keyboard, Monitor, Switch and Network Cable, covering a diverse vertical markets including retail, building, industry, education, commercial, city surveillance etc.

Our aim is to become a global leader in video surveillance industry which endeavors to build a safer world by providing professional, reliable and cutting-edge products and services.

Vision

- To become a global leader in video surveillance industry

Product line

- Network Camera, NVR, IP Storage, Decoder, Keyboard, Switch, Monitor, Network Cable

EASY

PixelSense Technology

PixelSense is Uniview's patented technology for switching Day & Night mode of IP camera. The traditional hardware switch is completed by an optical coupler which detects the illumination of the place where the camera is installed. However, if the illumination of installation environment is different from real shooting scene's, the Day & Night switch might be triggered incorrectly.

UNV PixelSense technology is more accurate. It detects the shooting scene's illumination (RGB) by a sensor, and drive IR-CUT to switch Day & Night mode. Besides, PixelSense technology doesn't rely on hardware optical coupler, it can reduce the failure rate.



Updated U-code Technology

U-code is a deep video compression technology which can reduce up to 90% bitrate in order to save bandwidth and storage space. U-code technology separates moving target and static background with different codec and adjust GOP dynamically, meanwhile keeping good image quality. Recently, U-code supports all triple streams of IP camera, and change frame rate dynamically by video content to reduce more bitrate.

Easy to Use/Maintain

Easy series IP cameras support one-click firmware upgrade, upgrade via cloud, and plug & play for installers and end users to use easily. While troubleshooting, it's also easy to output diagnosis log by one-click. Easy series IP cameras can also detect the network connection regularly, once the network is detected as disconnection, the IP camera will reset the network module inside of IP camera or reset the camera to recover.

Reliability at Design and Tests

From selective components to design product reliability during research and development, from process control during production to full-process traceability system, Uniview is dedicated to pursuit high quality. All sensor boards in UNV cameras are designed as 2mm thickness to avoid defocus by deformation while using in extremely harsh environment.

Navigator PTZ Dome Cameras

Due to highly accurate stepping motors and fast pan speed, Navigator PTZ dome cameras move stably and smoothly. Hence stable video can be produced without jerk. There are 1024 presets which can be easily configured as a cruise. Moreover, a built-in heater around the camera's window can remove snow and fog on lens automatically. Those remarkable functions would reduce unnecessary operations and provide better user experience.

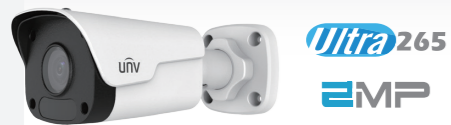
Long Distance PoE

Even though the camera's location is hundred meters away from NVR, users can still easily connect camera directly to NVR for both power supply and video streaming. The NVRs in Easy Series support up to 250 meters long distance PoE.

UBS Storage System

UBS is Uniview's patented technology for storage. Traditional NVR manufactures use general file system which is not optimized for video storage application. By operating directly on HDD to improve I/O efficiency and using small block as minimum unit, UBS technology can reduce the risk of data loss in case of system malfunction. Besides, UBS storage system also support disk roaming and precise playback which make surveillance business much easier.

IPC2122LR3-PF40(60)M-D



Mini IR Bullet Camera

- DWDR
- Up to 30m IR
- IP67
- HLC

IPC322LR3-VSPF28(40)-D



2-Axis IR Fixed Dome Camera

- DWDR
- Up to 30m IR
- IP67, IK10
- HLC
- Car-grade LED

IPC3612LR3-PF28(40)-D



IR Turret Camera

- DWDR
- Up to 30m IR
- 3-Axis
- HLC

IPC324LR3-VSPF28(40)-D



2-Axis IR Fixed Dome Camera

- DWDR
- Up to 30m IR
- IP67, IK10
- HLC
- Car-grade LED

IPC3614LR3-PF28(40)-D



IR Turret Camera

- DWDR
- Up to 30m IR
- 3-Axis
- HLC

IPC2324LBR3-SP-D
IPC2324LBR3-SPZ28-D



VF IR Bullet Camera

- DWDR
- Up to 30m IR
- 3-Axis
- IP67
- 2.8-12mm manual @SP, 2.8-12mm motorized @SPZ

IPC2322LBR3-SP-D
IPC2322LBR3-SPZ28-D



VF IR Bullet Camera

- DWDR
- Up to 30m IR
- 3-Axis
- IP67
- 2.8-12mm manual @SP, 2.8-12mm motorized @SPZ

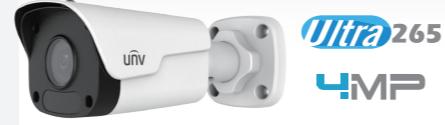
IPC3232LR3-VSP-D
IPC3232LR3-VSPZ28-D



VF IR Fixed Dome Camera

- DWDR
- Up to 30m IR
- 3-Axis
- IP67, IK10
- 2.8-12mm manual @VSP, 2.8-12mm motorized @VSPZ

IPC2124LR3-PF40(60)M-D



Mini IR Bullet Camera

- DWDR
- Up to 30m IR
- IP67
- HLC

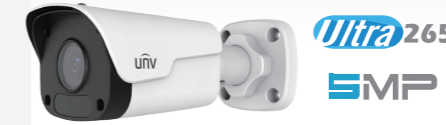
IPC3234LR3-VSP-D
IPC3234LR3-VSPZ28-D



VF IR Fixed Dome Camera

- DWDR
- Up to 30m IR
- 3-Axis
- IP67, IK10
- 2.8-12mm manual @VSP, 2.8-12mm motorized @VSPZ

IPC2125LR3-PF40(60)M-D



Mini IR Bullet Camera

- DWDR
- Up to 30m IR
- IP67
- HLC

IPC325LR3-VSPF28(40)-D



2-Axis IR Fixed Dome Camera

- DWDR
- Up to 30m IR
- IP67
- HLC
- Car-grade LED

IPC3615LR3-PF28(40)-D



Ultra265
EMP

IR Turret Camera

- DWDR
- Up to 30m IR
- IP67
- HLC

**IPC2325LBR3-SP-D
IPC2325LBR3-SPZ28-D**



Ultra265
EMP

VF IR Bullet Camera

- DWDR
- Up to 30m IR
- 3-Axis
- IP67
- 2.8-12mm manual @SP 2.8-12mm motorized @SPZ

**IPC6322LR-X22-C
IPC6322SR-X22P-C**



Ultra265
EMP

Navigator Series IR PTZ Dome Camera

- DWDR
- Up to 150m IR
- IP66
- -40°C ~ 66°C
- 22x optical zoom

**NVR301-04E/NVR301-08E
NVR301-16E**



- 4/8/16-ch IP input
- 1 SATA
- 4K, Ultra265
- 4/1 alarm I/O
- P2P, Email, UPnP, DDNS, NTP, DHCP,NAS

**NVR301-04-P4/NVR301-08-P8
NVR301-16-P8**



- 4/8/16-ch IP input
- 1 SATA
- 4K, Ultra265
- 4/1 alarm I/O
- 4/8/8 PoE ports
- P2P, Email, UPnP, DDNS, NTP, DHCP,NAS

**NVR302-09S
NVR302-16S**



- 9/16-ch IP input
- 2 SATA
- 4K, Ultra265
- P2P, Email, UPnP, DDNS, NTP, DHCP,NAS

**IPC6322LR-X33DU-C
IPC6322SR-X33DUP-C**



Ultra265
EMP

Navigator series IR PTZ Dome Camera

- 120dB WDR
- Up to 150m IR
- IP66
- -40°C ~ 66°C
- 33x optical zoom Starlight

**NVR301-04LB-P4
NVR301-08LB-P8**



- 4/8ch IP input
- 1 SATA
- Ultra265
- Desktop housing
- 4/8 PoE ports
- P2P, Email, UPnP, DDNS, NTP, DHCP

**NVR301-04S
NVR301-08S**



- 4/8-ch IP input
- 1 SATA
- 4K, Ultra265
- P2P, Email, UPnP, DDNS, NTP, DHCP,NAS

**NVR302-08S-P8/NVR302-16S-P8
NVR302-16S-P16**



- 8/16/16-ch IP input
- 2 SATA
- 4K, Ultra265
- 4/1 alarm I/O
- 8/8/16 PoE ports
- P2P, Email, UPnP, DDNS, NTP, DHCP,NAS

NVR302-32S



- 32-ch IP input
- 2 SATA
- 4K, Ultra265
- P2P, Email, UPnP, DDNS, NTP, DHCP

**NVR304-16S
NVR304-32S**



- 16/32-ch IP input
- 4 SATA
- 4K, Ultra265
- P2P, Email, UPnP, DDNS, NTP, DHCP

IP Kits

KIT/301-04LB-P4/4*2122LR3-PF40M-D
KIT/301-08LB-P8/4*2122LR3-PF40M-D



- 4/8ch 2MP bullet IPC
- 1 SATA
- Ultra265
- Desktop housing
- PoE kit
- P2P, Email, UPnP, DDNS, NTP, DHCP

KIT/301-04LB-P4/4*322LR3-VSPF28-D
KIT/301-08LB-P8/4*322LR3-VSPF28-D



- 4/8ch 2MP dome IPC
- 1 SATA
- Ultra265
- Desktop housing
- PoE kit
- P2P, Email, UPnP, DDNS, NTP, DHCP

KIT/301-04LB-P4/4*3612LR3-PF28-D
KIT/301-08LB-P8/4*3612LR3-PF28-D



- 4/8ch 2MP turret IPC
- 1 SATA
- Ultra265
- Desktop housing
- PoE kit
- P2P, Email, UPnP, DDNS, NTP, DHCP

KIT/NVR301-04LB-W
4*2122SR3-F40W-D



- 4ch 2MP bullet IPC
- 1 SATA
- Ultra265
- Desktop housing
- WIFI kit
- P2P, Email, UPnP, DDNS, NTP, DHCP

KIT/NVR301-04LB-W
4*322SR3-VSF28W-D



- 4ch 2MP dome IPC
- 1 SATA
- Ultra265
- Desktop housing
- WIFI kit
- P2P, Email, UPnP, DDNS, NTP, DHCP

StarView Series

StarView series can produce crystal clear video at up to 0.0005 lux low illumination, which redefined starlight. It supports 2MP and 5MP and backside illumination (BSI) sensor applies a big Iris lens at up to F1.2 to allow more light in. Meanwhile, the unique ISP technology can help to produce no smearing image at Low-Blur mode.

Smart Functions

Cameras in Prime series all embedded smart functions. For instance, crossing line, intrusion, face detection, audio exception, scene change, tampering, defocus, people counting, object abandon/removal and auto-tracking. Now, people counting function is upgraded by counting people faces in the video.



Environment Adaptability

Environment adaptability includes network adaptability for packet loss, image adaptability for different surveillance scenes (Starlight mode for low light, auto WDR/HLC/Defog, and Smart IR) and environment adaptability (auto heating at low temperature and snow removal).

Deep Learning Intelligence

The NVRs in Prime Series can provide accurate and real-time face comparison when used with Smart Bar which is powered by deep learning neural network algorithm. It is suitable for personnel identification application in different scenarios like buildings, communities, parks, chain stores, gas stations, supermarkets etc.

More Efficient More Reliable

Prime series IP cameras support wide working temperature range and input voltage. In the IK10 dome cameras, the professional FFC cable can deliver a better EMC test result. Image distortion rectifying algorithm is used for all wide angle lens at wide side. Prime series NVRs have many functions for supermarket and shopping mall, for example, POS, Heat Map, Fisheyes to facilitate different business. N+1 architecture was introduced to guarantee the stability of storage service in case of system failure. Excellent quality components like maglev fan and high quality capacitance are also used to ensure high quality.



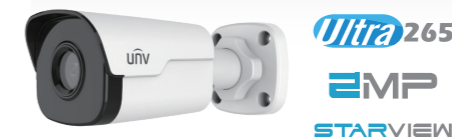
IPC2122SR3-PF40(60)-C



Mini IR Bullet Camera

- Low-Light
- DWDR
- Up to 30m IR
- IP67

IPC2122SR3-UPF40(60)-C



Mini IR Bullet Camera

- Starlight
- 120dB WDR
- Up to 30m IR
- IP67

IPC2222ER5-DUPF40(60)-C IPC2222EBR5-HDUPF40(60)



Bullet Camera

- Super Starlight @DUPF, Starlight @HDUPF
- 120dB WDR
- Up to 50m IR
- IP67, IK10
- Min. illumination: 0.0005lux @DUPF, SD/SDHC card slot @HDUPF, 60fps @HDUPF

IPC322SR3-DVPF28(40)-C



3-Axis IR Fixed Dome Camera

- Low-Light
- 120dB WDR
- Up to 30m IR
- IP67, IK10
- SD/SDHC card slot
- Car-grade LED

IPC322ER3-DUVPF28(40)-C



3-Axis IR Fixed Dome Camera

- Starlight
- 120dB WDR
- Up to 30m IR
- IP67, IK10
- SD/SDHC card slot
- Car-grade LED

IPC3612ER3-PF28(40)-C IPC3612ER3-PF28(40)M-C



IR Turret Camera

- Low-Light
- DWDR
- Up to 30m IR
- IP67
- Metal base (@M)

IPC312SR-VPF28(40)-C



Ultra 265
EMP

IR Mini Dome Camera

- Low-Light • DWDR • Up to 15m IR
- IP66, IK10, Built-in Mic • SD/SDHC card slot
- Car-grade LED

**IPC2322EBR5-P-C
IPC2322EBR5-DPZ28-C**



Ultra 265
EMP

VF IR Bullet Camera

- Low-Light • 120dB WDR • Up to 50m IR • IP67
- SD/SDHC card slot • 2.8-12mm manual @P
- 2.8-12mm motorized @DPZ

**IPC2322EBR5-HDUPZ
IPC2322EBR5-DUPZ-C**



Ultra 265
EMP
STARVIEW

VF IR Bullet Camera

- Super Starlight • 120dB WDR • Up to 50m IR
- IP67 • Min. illumination:0.0005lux
- 60fps, 2.7-13.5mm motorized

IPC3632ER3-DUPZ-C

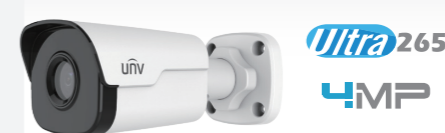


Ultra 265
EMP
STARVIEW

Motorized VF IR Dome Camera

- Super Starlight • 120dB WDR • Up to 30m IR • IP67
- SD/SDHC card slot • 2.7-13.5mm motorized
- Min. illumination:0.0005lux

IPC2124SR3-DPF36(60)



Ultra 265
4MP

Mini IR Bullet Camera

- Low-Light • 120dB WDR • Up to 30m IR • IP67

IPC2224SR5-DPF40(60)-B



Ultra 265
4MP

IR Fixed Bullet Camera

- Low-Light • 120dB WDR • Up to 50m IR • IP67, IK10
- SD/SDHC card slot

**IPC3232ER-DV-C
IPC3232ER3-DVZ28-C**



Ultra 265
EMP

VF IR Fixed Dome Camera

- Low-Light • 120dB WDR • Up to 30m IR • IP67, IK10
- SD/SDHC card slot • 2.8-12mm manual @DV
- 2.8-12mm motorized @DVZ

IPC3232ER3-DUVZ-C



Ultra 265
EMP
STARVIEW

VF IR Fixed Dome Camera

- Super Starlight • 120dB WDR • Up to 30m IR
- IP67, IK10 • SD/SDHC card slot
- 2.7-13.5mm motorized, Min. illumination:0.0005lux

IPC3632ER3-DPZ28-C



Ultra 265
EMP

Motorized VF IR Dome Camera

- 120dB WDR • Up to 30m IR • IP67, 3-Axis, Built-in Mic
- SD/SDHC card slot • 2.8-12mm motorized

IPC324ER3-DVPF28(36)



Ultra 265
4MP

3-Axis IR Fixed Dome Camera

- Low-Light • 120dB WDR • Up to 30m IR
- IP67, IK10 • SD/SDHC card slot • Car-grade LED

IPC3614SR3-DPF28(36)



Ultra 265
4MP

IR Turret Camera

- Low-Light • 120dB WDR • Up to 30m IR • IP67
- Metal base (@M)

IPC314SR-DVPF28(36)



Ultra 265
4MP

IR Mini Dome Camera

- Low-Light • 120dB WDR • Up to 15m IR
- IP66, IK10, Built-in Mic • SD/SDHC card slot
- Car-grade LED

IPC814SR-DVPF16



Ultra 265
4MP

Fisheye

- Low-Light
- 120dB WDR
- Up to 10m IR
- IP66, IK10
- Built-in Mic

**IPC2324EBR-DP
IPC2324EBR-DPZ28**



Ultra 265
4MP

VF IR Bullet Camera

- Low-Light
- 120dB WDR
- Up to 30m IR
- IP67
- SD/SDHC card slot
- 2.8-12mm manual @DP
- 2.8-12mm motorized @DPZ

**IPC3234SR-DV
IPC3234SR3-DVZ28**



Ultra 265
4MP

VF IR Fixed Dome Camera

- Low-Light
- 120dB WDR
- Up to 30m IR
- IP67, IK10
- SD/SDHC card slot
- 2.8-12mm manual @DV
- 2.8-12mm motorized @DVZ

IPC3615ER3-ADUPF28(40)M



Ultra 265
SMP
STARVIEW

IR Turret Camera

- Starlight
- 120dB WDR
- Up to 30m IR
- IP67
- Metal base

IPC2325EBR5-DUPZ



Ultra 265
SMP
STARVIEW

VF IR Bullet Camera

- Starlight
- 120dB WDR
- Up to 50m IR
- IP67
- SD/SDHC card slot
- 2.7-13.5mm motorized

IPC3235ER3-DUVZ



Ultra 265
SMP
STARVIEW

VF IR Fixed Dome Camera

- Starlight
- 120dB WDR
- Up to 30m IR
- IP67, IK10
- SD/SDHC card slot
- 2.7-13.5mm motorized

IPC3634ER3-DPZ28



Ultra 265
4MP

Motorized VF IR Dome Camera

- Low-Light
- 120dB WDR
- Up to 30m IR
- IP67, 3-Axis, Built-in Mic
- SD/SDHC card slot
- 2.8-12mm motorized

IPC2125SR3-ADUPF40(60)



Ultra 265
SMP
STARVIEW

Mini IR Bullet Camera

- Starlight
- 120dB WDR
- Up to 30m IR
- IP67
- Mic

IPC325ER3-DUVPF28(40)



Ultra 265
SMP
STARVIEW

3-Axis IR Fixed Dome Camera

- Starlight
- 120dB WDR
- Up to 30m IR
- IP67, IK10
- SD/SDHC card slot

IPC3635ER3-DUPZ



Ultra 265
SMP
STARVIEW

Motorized VF IR Dome Camera

- Starlight
- 120dB WDR
- Up to 30m IR
- IP67
- SD/SDHC card slot
- 2.7-13.5mm motorized

IPC2328SBR5-DPZ



Ultra 265
4K

IR 4K Bullet Camera

- Low-Light
- 120dB WDR
- Up to 50m IR
- IP67
- SD/SDHC card slot
- 2.8-12mm motorized

IPC2128SR3-DPF40/60



Ultra 265
4K

IR 4K Mini Bullet Camera

- Low-Light
- 120dB WDR
- Up to 30m IR
- IP67

IPC3238SR3-DVPZ



Ultra 265
4K

IR 4K Fixed Dome Camera

- Low-Light • 120dB WDR • Up to 30m IR • IP67
- SD/SDHC card slot • 2.8-12mm motorized

IPC3618SR3-DPF28 (40)



Ultra 265
4K

IR 4K Turret Camera

- Low-Light • 120dB WDR • Up to 30m IR • IP67
- 3-Axis

IPC3638SR3-DPZ



Ultra 265
4K

IR 4K Eyeball Camera

- Low-Light • 120dB WDR • Up to 30m IR
- IP67, 3-Axis, Built-in Mic
- SD/SDHC card slot • 2.8-12mm motorized

**NVR302-08E-P8-B/NVR302-16E-P8-B
NVR302-16E-P16-B**



- 8/16/16-ch IP input • 2 SATA • 4K, Ultra265
- 4/1 alarm I/O • 8/8/16 PoE ports
- P2P, Email, UPnP, DDNS, NTP, DHCP,NAS

**NVR304-16E-B
NVR304-32E-B**



- 16/32-ch IP input • 4 SATA • 4K, Ultra265
- 16/4 alarm I/O • Dual network interfaces
- P2P, Email, UPnP, DDNS, NTP, DHCP,NAS

**NVR304-16EP-B
NVR304-32EP-B**



- 16/32-ch IP input • 4 SATA • 4K, Ultra265
- 16/4 alarm I/O • 16 PoE ports
- P2P, Email, UPnP, DDNS, NTP, DHCP,NAS

IPC6222ER-X20(P)-B



Ultra 265
EMP

IR PTZ Dome Camera

- P: PoE supported • 120dB WDR • Up to 150m IR
- IP66 • -40°C ~ 65°C • 20X optical zoom

IPC6222ER-X30(P)-B



Ultra 265
EMP

IR PTZ Dome Camera

- P: PoE supported • 120dB WDR • Up to 150m IR
- IP66 • -40°C ~ 65°C • 30X optical zoom

**NVR302-09E-B
NVR302-16E-B**



- 9/16-ch IP input • 2 SATA • 4K, Ultra265
- 8/2 alarm I/O • Dual network interfaces
- P2P, Email, UPnP, DDNS, NTP, DHCP,NAS

**NVR308-16E-B/NVR308-32E-B
NVR308-64E-B**



- 16/32/64-ch IP input • 8 SATA • 4K, Ultra265
- 16/4 alarm I/O • Dual network interfaces
- P2P, Email, UPnP, DDNS, NTP, DHCP,NAS

**NVR308-32R-B
NVR308-64R-B**



- 32/64-ch IP input • 8 SATA • 4K, Ultra265
- 16/4 alarm I/O • RAID 0, 1, 5, 6, 10 & hot-swap
- Dual network interfaces

**NVR316-32R-B
NVR316-64R-B**



- 32/64-ch IP input • 16 SATA • 4K, Ultra265
- 16/4 alarm I/O • RAID 0, 1, 5, 6, 10 & hot-swap
- Dual network interfaces

**NVR201-04U
NVR201-08Q**



- 4/8-ch analog input 2ch IP input
- 1 SATA
- Hybrid NVR
- AHD/TVI/CVI/CVBS/IP
- 4/8 analog ports
- P2P, Email, UPnP, DDNS, NTP, DHCP

**NVR302-08Q/NVR302-08U
NVR302-16Q**



- 8/8/16-ch analog input 4/8/8 IP input
- 2 SATA
- Hybrid NVR
- AHD/TVI/CVI/CVBS/IP
- 8/8/16 analog ports
- P2P, Email, UPnP, DDNS, NTP, DHCP, NAS



StarView+ Series

StarView+ series applies Sony 1/1.8” big size sensor and big iris lens to support high-end starlight mode. It includes box camera, 22X bullet camera, 22X/38X PTZ dome camera, and 4X vari-focal bullet/dome camera. StarView+ series is more popular for some projects, like the airport, highway, or safe city application.

4K Series

4K series delivers box camera, 4X bullet/dome, 22X PTZ dome camera products at 30fps. High resolution has more surveillance range and easy to zoom in by digital zoom to get more details. As we all know, 4K 30fps generates high bitrate, bandwidth and also drives the storage cost higher. Uniview’s U-code deep video compression technology can perfectly solve the problem by reducing up to 90% bitrate.



Top Level Performance

Pro Series NVRs support independent video output and decoding card to extend decoding ability. The decoding card supports video wall function for both display and split application. Dedicated mini SAS interface is used to connect disk enclosure, hence the storage capacity can be doubled, even tripled. The all-in-one VMS server Unicorn can manage up to 2000 video channels, covering most of small to median size business applications. Master-slave architecture helps to extend system bandwidth to meet different requirements.

Industry-leading Reliability

NVRs in Pro Series support 1:1 carrier-class failover to switch service seamlessly. Uniview provides industry-leading reliable solution to keep data integrity and it supports industrial grade RAID i.e. RAID 0, 1, 5, 6, 10, 50, 60.

IPC562E-DUG



Box Camera

- 120dB WDR
- Optical defog
- ABF
- SD/SDHC card slot
- Fiber interface
- 1/1.8" CMOS Sensor

IPC262EBR9-HDUPZ



IR Bullet Camera

- 120dB WDR
- Up to 90m IR
- IP67
- SD/SDHC card slot
- 4X optical zoom
- 1/1.8" CMOS Sensor

IPC252ERA-X22DUG IPC252ERA-X22DUP



IR Bullet Camera

- 120dB WDR
- Up to 200m IR
- IP67
- SD/SDHC card slot
- 22X camera module
- Fiber interface @G, PoE@P
- 1/1.8" CMOS Sensor

IPC3232ER3-HDUVZ



IR Dome Camera

- 120dB WDR
- Up to 30m IR
- IP67
- SD/SDHC card slot
- 4X optical zoom
- 1/1.8" CMOS Sensor

IPC568E-G



4K Box Camera

- Optical defog
- SD/SDHC card slot
- Fiber interface

IPC268ER9-DZ



IR 4K Bullet Camera

- 120dB WDR
- Up to 100m IR
- IP67
- SD/SDHC card slot
- 2.8-12mm AF motorized

IPC3238ER3-DVZ



Ultra 265
4K
1/1.7" CMOS Sensor

IR 4K Fixed Dome Camera

- 120dB WDR • Up to 30m IR • IP67
- SD/SDHC card slot • 2.8-12mm AF motorized

IPC868ER-VF18-B



Ultra 265
4K
1/1.7" CMOS Sensor

4K Fisheye Camera

- DWDR • Up to 20m IR • IP66, Built-in mic & speaker
- SD/SDHC card slot • 1.8mm fixed lens

IPC6252SR-X22U(G)
IPC6252SR-X33U



Ultra 265
EMP
STARVIEW+

PTZ Dome Camera

- 120dB WDR • Up to 200m IR • IP66 • -40°C ~ 70°C
- 22X/33X optical zoom, Fiber interface @G • 24 VAC/24 VDC
- 1/1.8" CMOS Sensor @22U(G) • 1/2.8" CMOS Sensor @33U

IPC6222E-X33UP



Ultra 265
EMP
STARVIEW+

PTZ Dome Camera

- 120dB WDR • IP66 • -30°C ~ 70°C
- 33X optical zoom • 24 VAC/24 VDC/PoE
- 1/2.8" CMOS Sensor

IPC6222EI-X22UP-C



Ultra 265
EMP
STARVIEW+

PTZ Indoor Dome Camera

- 120dB WDR • -20°C ~ 50°C • 22X optical zoom
- 24 VAC/24 VDC/PoE • 1/2.8" CMOS Sensor

IPC6258SR-X22P



Ultra 265
4K
1/1.7" CMOS Sensor

IR 4K PTZ Dome Camera

- DWDR • Up to 200m IR • IP66 • PoE supported
- 22X optical zoom • 24 VAC/24 VDC/PoE

IPC6252SL-X33UP



Ultra 265
EMP
STARVIEW+

PTZ Dome Camera

- 120dB WDR • IR:30m Laser:30-500m • IP66
- -40°C ~ 70°C • 33X optical zoom
- 24 VAC/24 VDC • 1/2.8" CMOS Sensor

IPC6852SR-X44U



Ultra 265
EMP
STARVIEW+

PTZ Dome Camera

- 120dB WDR • Up to 250m IR • IP66 • -45°C ~ 70°C
- 44X optical zoom • 24 VAC/24 VDC
- 1/2.8" CMOS Sensor

IPC6852SR-X38UG



Ultra 265
EMP
STARVIEW+

PTZ Dome Camera

- 120dB WDR • Up to 250m IR • IP66 • -45°C ~ 70°C
- 38X optical zoom • 24 VAC/24 VDC
- 1/1.8" CMOS Sensor

IPC6858SR-X22



Ultra 265
4K
1/1.7" CMOS Sensor

IR 4K PTZ Dome Camera

- DWDR • Up to 250m IR • IP66 • 22X optical zoom
- 24 VAC/24 VDC

NVR516-64
NVR516-128



- 64/128-ch IP input • 16 SATA • 4K, Ultra265
- 24/8 alarm I/O • RAID 0/1/5/6/10/50/60 & hot-swap
- Redundant power supply(optional)
- Extra 12 HDMI outputs extendable
- Extra 2 disk enclosures extendable

UNICORN



- 2000-ch IP input • 16 SATA • 4K, Ultra265
- 24/8 alarm I/O • RAID 0/1/5/6/10/50/60 & hot-swap
- Redundant power supply(optional)
- Extra 12 HDMI outputs extendable
- Extra 2 disk enclosures extendable

Monitor

MW3219-V



19" LED FHD Monitor

- 1366x768
- 200cd/m² Brightness
- VGA
- 7"24H

MW3222-V



22" LED FHD Monitor

- 1920x1080
- 250cd/m² Brightness
- VGA/HDMI/Audio in
- 7"24H
- Build-in speaker

MW3232-E



32" LED FHD Monitor

- 1920x1080
- 280cd/m² Brightness
- DVI/VGA/HDMI/Audio in
- 7"24H
- Build-in speaker

MW3243-E




43" LED FHD Monitor

- 1920x1080
- 300cd/m² Brightness
- DVI/VGA/HDMI/Audio in
- 7"24H
- Build-in speaker

PoE Switch & Network Cable

NSW2010-6T-PoE-IN



4-Port PoE Switch

- 100Mbps Unmanaged PoE Switch
- PoE power budget 65W
- EXTEND mode up to 250m

NSW2010-10T-PoE-IN



8-Port PoE Switch

- 100Mbps Unmanaged PoE Switch
- PoE power budget 120W
- EXTEND mode up to 250m

NSW2010-16T2GC-PoE-IN



16-Port PoE Switch

- 100Mbps Unmanaged PoE Switch
- PoE power budget 250W
- EXTEND mode up to 250m


NSW2010-24T2GC-PoE-IN



24-Port PoE Switch

- 100Mbps Unmanaged PoE Switch
- PoE power budget 370W
- EXTEND mode up to 250m

**CAB-LC2100A-IN
CAB-LC3100A-IN**



UTP Category 5E/6 Cable

- 305m, OFC/0.5mm/0.57mm, Up to 300m at 10Mbps
- UL&CPR certification