

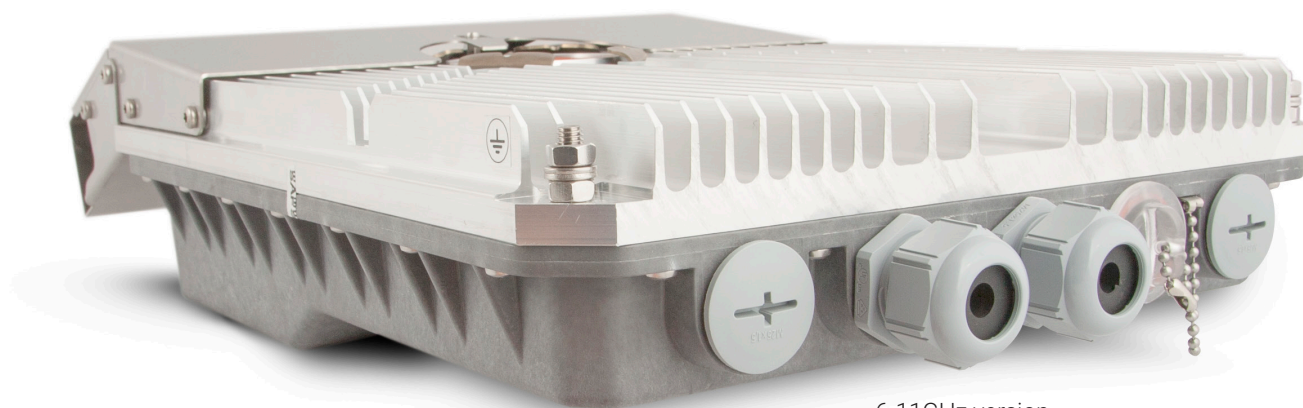


Integra-GS

carrier-grade microwave radio,
delivering up to 1Gbps Full Duplex



- SAF Tehnika most powerful modem yet with 3.5MHz to 60MHz channel bandwidth and up to 2048QAM modulation support for universal network upgrades in a compact, single hardware design.
- Full outdoor unit includes radio, modem, Ethernet network processor, and PoE splitter with surge arrestor.
- SFP ports for easy installation – choose single-mode or multi-mode fibre by changing SFP's, add fibre optic cabling later.
- Advanced Ethernet network processor features AES encryption, efficient header compression, advanced Quality of Service, and MEF compliant functionality.
- Built-in protected 2+0 layer 1 link bonding provides double capacity up to 982 Mbps and up to 1Gbps with header compression.



6-11GHz version

Integra-GS is an unbelievably light, energy efficient carrier-grade system that exemplifies an outstanding return on smart engineering - the synergy of high competence in radio electronics and materials science. Slip-fit design allows integration with existing high performance antenna systems or integration with 2+0 aggregation setups for up to 982Mbps Full Duplex capacity without header compression. Gigabit Power over Ethernet (PoE) port defines simple installation, while dual SFP slots enable fibre optic installation – giving the user ultimate flexibility in cable design.

Capacity	up to 1Gbps with Header compression
Frequency bands	6GHz, 7GHz, 8GHz, 11GHz, 13GHz, 15GHz, 17GHz UL, 18GHz, 23GHz, 24GHz UL, 25GHz, 26GHz, 28GHz, 38GHz, and more*
Modulation	4QAM / 16QAM / 32QAM / 64QAM / 128QAM / 256QAM / 512QAM / 1024QAM / 2048QAM with Hitless ACM
Configurations	1+0, 2+0 link bonding, 1+1*
Channel bandwidth	
ETSI	from 3.5MHz up to 56MHz, up to 472 Mbps
FCC	from 5MHz up to 60MHz, up to 491 Mbps
Gigabit Ethernet	
1x RJ-45	Electrical with built-in PoE splitter and surge arrestor
2x SFP	Fibre Optics
Service ports	
3.5mm	Audible alignment and RSSI
USB B-Type	Terminal Access
LED	Power On, Link Synchronization, RSL, Polarization accuracy
Managed Gigabit Switch functionality	802.1Q VLANs with QoS/CoS incl. WRED*, shaping, DWRR and on MPLS-TP exp bit; Spanning Tree Protocol, Jumbo frames and more*
Management	In-band MNG over same ETH port; SNMP v1/2c/3, SSH, Telnet, HTTPS, Serial, RADIUS, Network Time Protocol
Carrier Ethernet functionality	Provider Bridging, MEF9&14, High Efficiency Header Compression, OAM*
Performance monitoring	Performance graphs, constellation diagram, alarms, detailed counters
Antenna type	External, Slip-fit
Form factor	235 x 250 x 72 mm / 9.26" x 9.85" x 2.84", 2.9 kg / 6.4 lbs (15-42GHz) 280 x 437 x 100 mm / 11.02" x 17.2" x 3.9", 6.5 kg / 14.3 lbs (6-11GHz)
Temperature range	-33 ... +55 °C / -28 ... +130 °F

* Please contact SAF Tehnika representative for more information

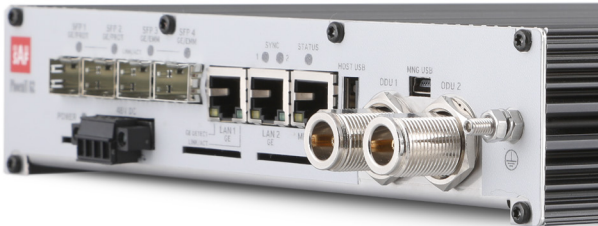
PhoeniX G2

MISSION-CRITICAL | HIGH CAPACITY BACKHAUL



- Flexible modular wireless system transporting IP with native ASI and TDM data over 2 GHz - 38 GHz radios.
- High spectral efficiency delivering more than 900 Mbps per 2+0 system.
- Flexible configurations including all-indoor or split-mount architecture from 1+0 to 2+0 XPIC up to 8+0 delivering 4+ Gbps over a single path.
- Fully redundant system configurations for protecting every component.
- Very High Power radios for long distance back-haul.
- Ideal microwave system for critical network infrastructure with secure HTTPS/SSH access, FIPS 197 256-bit AES over the air encryption at 99.9999% availability.

Supporting channel bandwidths of up to 60 MHz, the Phoenix G2 enables transition from TDM only or ASI only networks to hybrid native ASI/T1/E1/IP networks, providing up to 16 ASI ports for video or up to 64E1/T1 lines for telephony, and Gigabit Ethernet ports for IP connectivity with total throughput of up to 900 Mbps in 2+0 configuration.



Phoenix G2
IDU modem

ETSI	FCC
Frequency Bands	2GHz*, 4GHz, U4GHz, L6GHz, U6GHz 7GHz, 8GHz, 11GHz, 13GHz, 18GHz, 23GHz, 38GHz
Channel Bandwidths	from 7 MHz, up to 56 MHzfrom 10 MHz, up to 60 MHz
Modulation	up to 1024 QAM
Capacity	up to 900 Mbps in 2+0
Configurations	1+0, 1+1 HSB/SD/FD, 1+0 Dual (Repeater), 2+0 (Layer 1 aggregation), 2+0 XPIC, 2+2** (with two IDUs)
Synchronization	PTP 1588v2, SyncE
Encryption	AES 256-bit
Traffic/Management ports	3x 10/1000Base-T, RJ-45 – for traffic and/or management access, 4x SFP (1000BseSX/LX) – for traffic, also work as Extension/Protection ports/Aggregation ports, USB B – alternative serial IP management access, USB A - flash memory port, 2x N-Type Female – for connection to RF's
Management	MIB, SNMP v1/v2c /v3, Web GUI (HTTP/HTTPS), CLI (Telnet/SSH), Serial interface (USB IP port) , in-band or out-band management
Ethernet switch	Managed Gigabit Ethernet Layer 2
QoS	64 level DiffServ (DSCP) or 8 level 802.1p mapped in 4 prioritization queues with VLAN support, IPv6 Traffic Class
VLAN support	802.1Q, up to 4096 VLANs
IDU Operational use	ETSI EN 300 019, Part 1-3, Class 3.2
Max. power consumption	IDU only: <30W IDU+2xODU: <180W

* Please contact a SAF Tehnika representative for more information

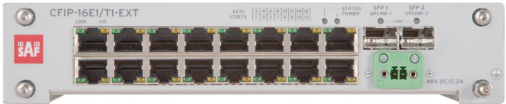
Maximum Tx Power [dBm] for Phoenix G2*

Modulation	2 GHz (VHP)**	4/U4 GHz (HP)	L6/U6 GHz (SP/HP/VHP)	7 GHz (SP/HP/VHP)	8 GHz (SP/HP/VHP)	11 GHz (SP/HP/VHP)	13 GHz (SP/HP/VHP)	18 GHz (SP/VHP)	23 GHz (SP)	38 GHz (SP)
4 QAM	+35	+33	+19/+27/+33	+19/+27/+32	+19/+27/+31	+19/+25/+29	+19/+25/+28	+19/+26	+19	+17
16 QAM	+34	+32	+18/+26/+32	+18/+26/+31	+18/+26/+30	+18/+24/+28	+18/+24/+27	+18/+25	+18	+16
32 QAM	+33	+31	+17/+25/+31	+17/+25/+30	+17/+25/+29	+17/+23/+27	+17/+23/+26	+17/+24	+17	+15
64 QAM	+32	+30	+16/+24/+30	+16/+24/+29	+16/+24/+28	+16/+22/+26	+16/+22/+25	+16/+23	+16	+14
128 QAM	+32	+30	+16/+24/+30	+16/+24/+29	+16/+24/+28	+16/+22/+26	+16/+22/+25	+16/+23	+16	+14
256 QAM	+31	+29	+15/+23/+29	+15/+23/+28	+15/+23/+27	+15/+21/+25	+15/+21/+24	+15/+22	+15	+13
512 QAM	+30	+28	+14/+22/+28	+14/+22/+27	+14/+22/+26	+14/+20/+24	+14/+20/+23	+14/+21	+14	+12
1024 QAM	+27	+25	+11/+19/+25	+11/+19/+24	+11/+19/+23	+11/+17/+21	+11/+17/+20	+11/+18	+11	+9

* Preliminary data
** 2 GHz ODU is currently in development



CFIP-ASI-EXT
EAGMEXA4



CFIP-16E1/T1-EXT
EAGMEX16

ASI	Unbalanced, 75 ohm	-
16xE1/T1	-	G.703-E1 balanced 120ohm for E1 mode G.703-E1 unbalanced 75 ohm for E1 mode T1.102-T1/100 ohm for T1 mode
Scalability	Cascading up to four external modules	
Ports		
IDU connection	1x SFP port 1000Base-SX (proprietary GigE protocol) Connection to	
Connection to next External module	1x SFP port 1000Base-SX (proprietary GigE protocol)	
ASI ports	4x BNC	-
E1 ports	-	16x RJ-45
DC port	Industrial power connector	
Mechanical & Electrical		
Dimensions: HxWxD	½ width 1U (45 x 210 x 240 mm) / (1.77 x 8.27 x 9.45 in)	
Weight	1.3 kg / 2.87 lb	
Max. power consumption	IDU: <9 W	
DC port	-20V to -60V DC	



SP/HP ODU



VHP
ODU



IRFU

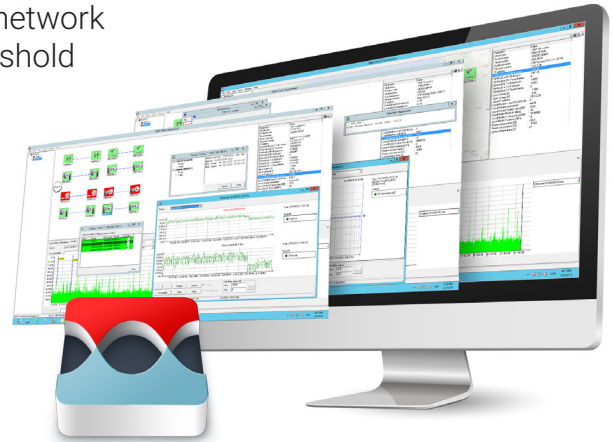


	SP ODU	HP ODU	VHP ODU	IRFU
Ports				
Antenna	N-type or flange	N-type or flange	N-type or flange	A) N-Type or flange B) SMA Tx and Rx ports
IF to IDU	N-type	N-type	N-type	SMA
RSSI	BNC	BNC	BNC	2-port for multi-meter
Power	over IF port	over IF port	over IF port	2-pin power port (alternative to IF port)
Mechanical & Electrical				
Operational use	Conforms to ETSI EN 300 019 Class 4.1, IP65, NEMA 4X			Conforms to ETSI EN 300 019 Class 3.1E, IP20, NEMA 1
Temperature Range	-33°C to +55°C	-33°C to +55°C	-33°C to +55°C	-5°C to +55°C
Dimensions HxWxD/width	288x288x80mm / 3.5kg	288x288x80mm / 3.5kg	280x437x110mm / 7.5kg	19" 2U rack 90x430x260 / 5.8kg
IF port surge protection	Conforms to ETSI EN 301 489-1; EN 61000-4-5; IEC 61000-4-5			
Input DC voltage	-40.5V to -57V DC (conforms to ETSI EN 300 132-2)			
Max. power consumption	13-27W	21-39W	39-55W	SP: 13-27W; HP: 21-39W; VHP: 39-55W

SAF NMS

SAF NMS provides the following functionality:

- Real-time monitoring and management of SAF network elements (predefined polling profiles, alarm threshold values)
- Event and fault notifications (including SMS and e-mail)
- Easy-to-use GUI (including Android app)
- Secure access (including SNMPv3 support)
- Northbound interface, backup server support
- FCAPS compliance



Phoenix G2 in your network

